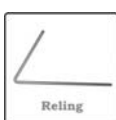


BRUNNER FIREPLACES



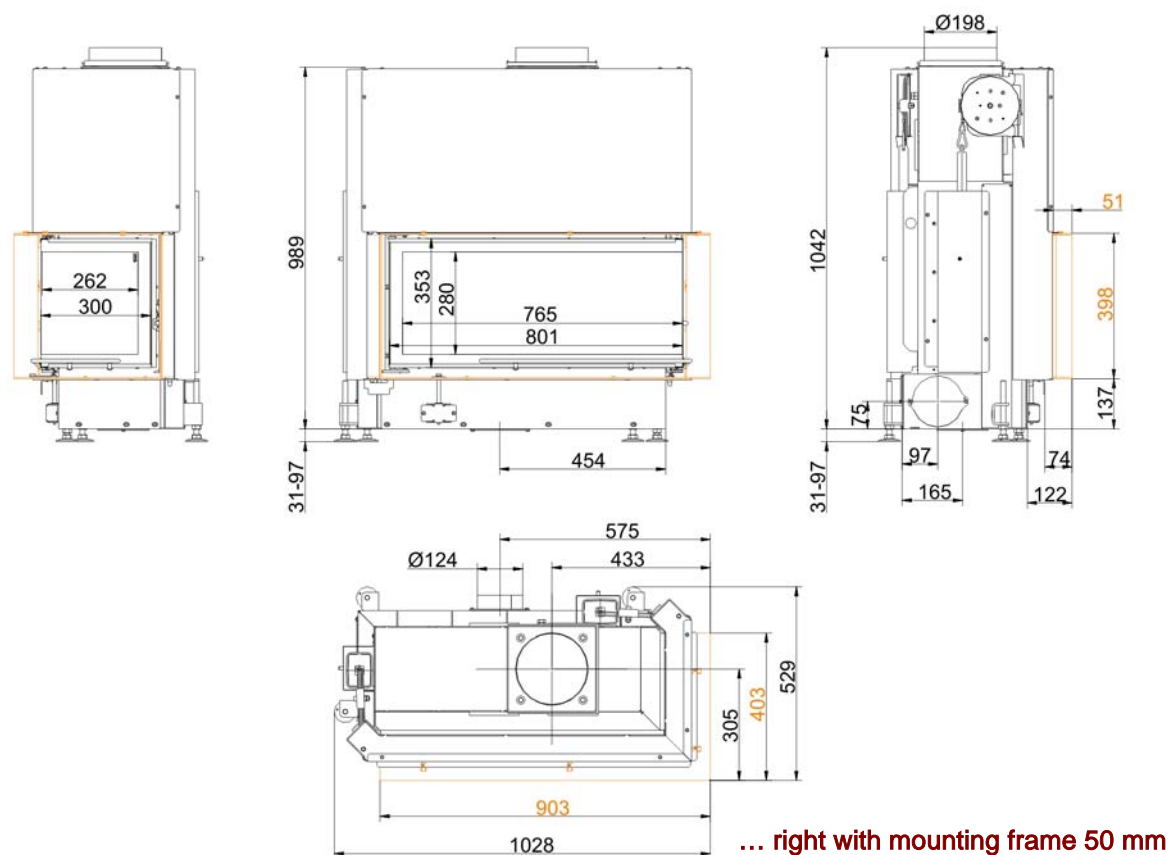
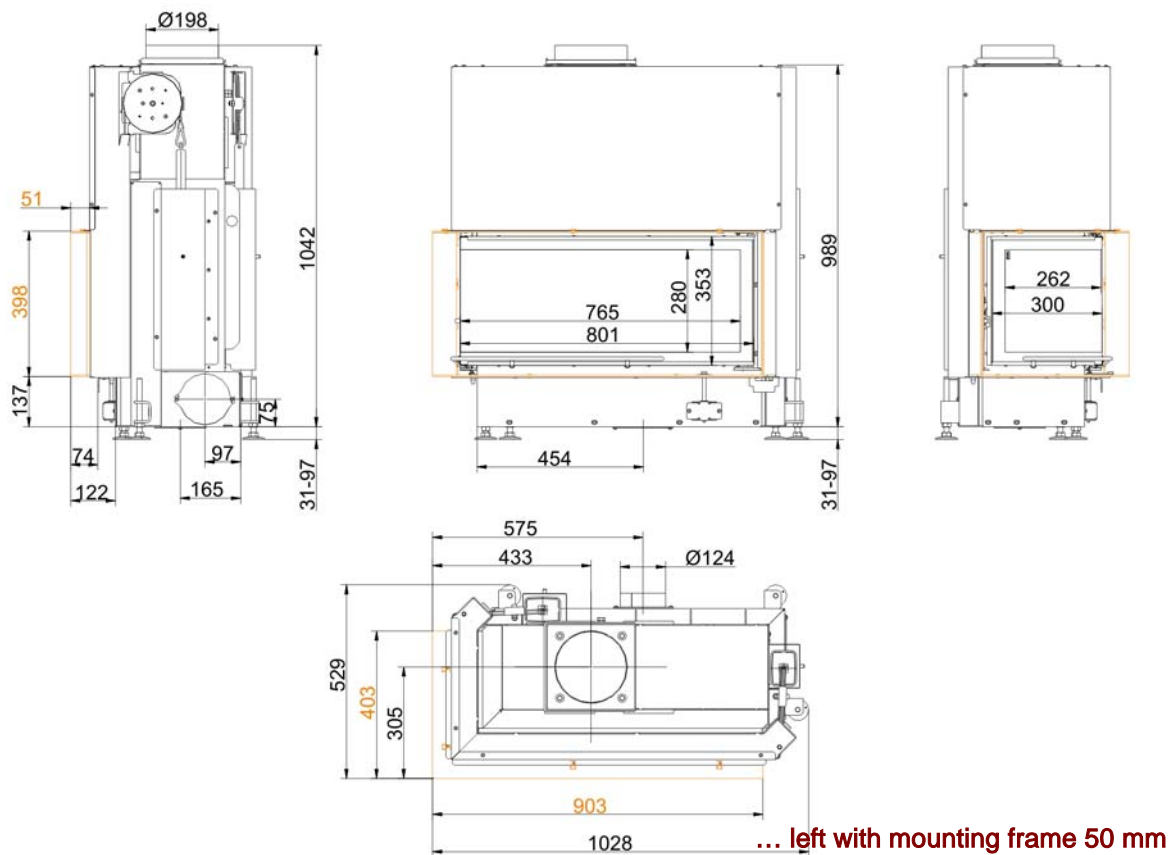
Architektur-Eck 38/86/36 lifting doors

State: 31.01.2013



BRUNNER®
made in germany

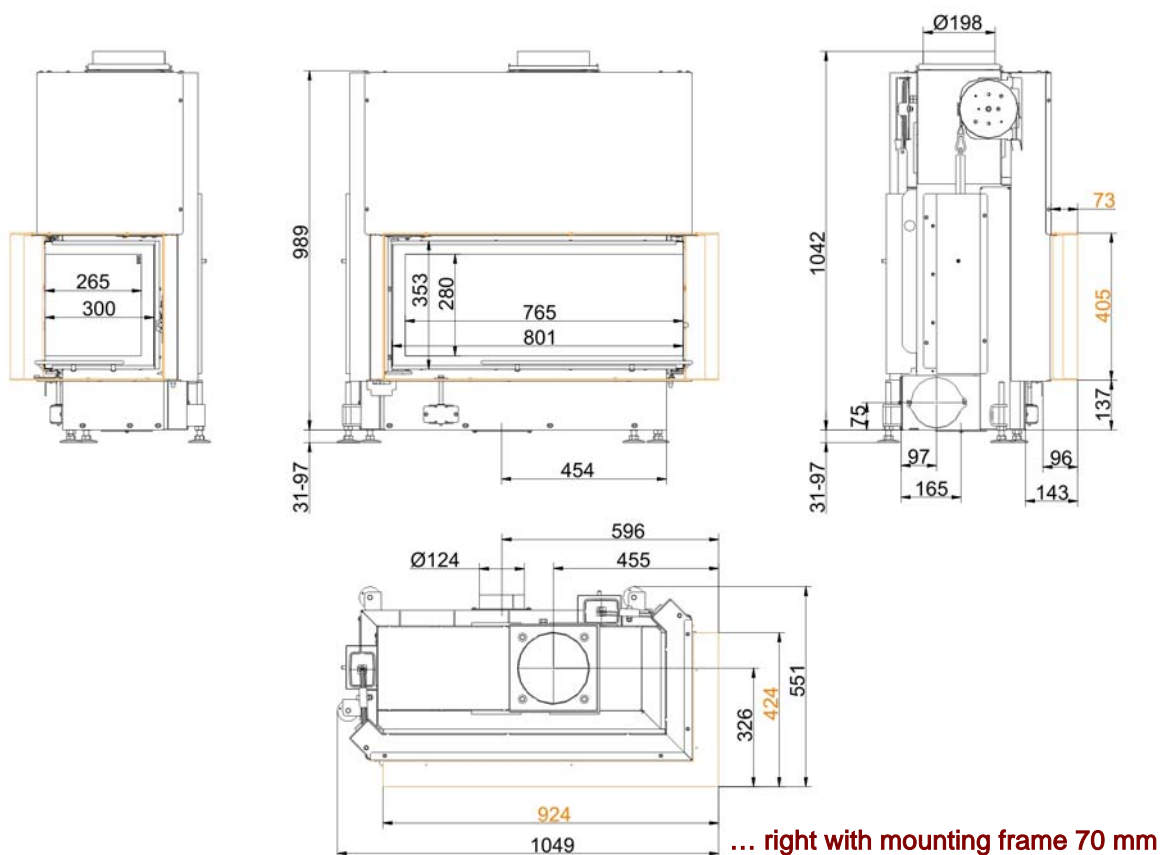
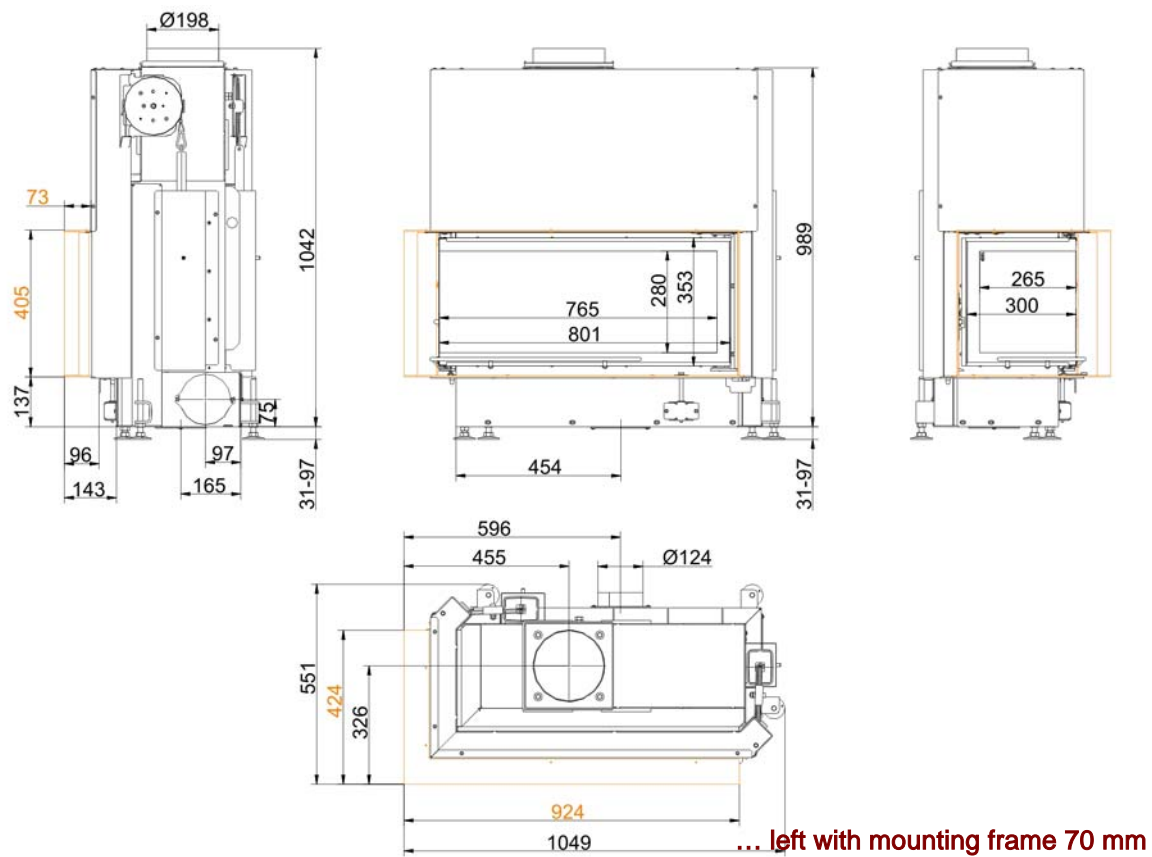
Dimension sheet | **Architektur-Eck 38/86/36 lifting doors**



We suggest for CAD planing Palette CAD. Permanent updated drawings: www.brunner.de

Frames / front versions are marked colored. Smoke pipe adapter fixed on the side is available against surcharge.

Dimension sheet | **Architektur-Eck 38/86/36 lifting doors**



We suggest for CAD planing Palette CAD. Permanent updated drawings: www.brunner.de

Frames / front versions are marked colored. Smoke pipe adapter fixed on the side is available against surcharge.

Planning and installation

Architektur-Eck 38/86/36

Tested according to	EN 13229 W		EN 13229 W
Values measured at	nominal load		open door
Suitable for all construction types according to rules	OK		OK
Data for functional demonstration			
Rated heat power	kW	10	-
Firewood consumption	kg/h	3,1	3,1
Combustion performance	kW	13,5	13,5
Flue gas mass flow	g/s	11	75
Outlet temperature (before heating surface)	°C	-	-
Flue gas temperature after			
attached steel smoke hood	°C	220	135
adjoining cast iron radiator (GNF10)	°C	-	-
accumulation rings (MAS) ¹⁾	°C	-	-
adjoining ceramic accumulator ²⁾	°C	-	-
ceramic modular accumulator (KMS system)	°C	-	-
water boiler	°C	-	-
Necessary supply pressure	Pa	12	6
Combustion air consumption	m³/h	30	200
Combustion air connection Ø	mm	125	-
Heat distribution			
Insert / heating surface	%	55 / -	- / -
Glass (single / double)	%	45 / -	- / -
Boiler	%	-	-
Cross-section of gratings for max. warm air power			
Supply air	cm²	900	-
Warm air	cm²	900	-
Minimal oven surface for closed construction type			
Surface giving off heat	m²	4,0	-
Space inside oven chamber			
Distance to oven chamber wall	cm	8	8
Distance to floor	cm	-	-
Heat insulation without / with ³⁾ air gratings			
Wall	cm	16 / 12	16 / 12
Floor	cm	2 / 2	2 / 2
Ceiling	cm	28 / 20	28 / 20
Insulation of additional fire door DHT	cm	-	-
Brick lining of protected walls	cm	10	10
Weight			
Fireplace + burning chamber	kg	185 + 73	
meets requirement limit values for			
Germany / Austria / Switzerland / Norway		1.BImSchV (Stufe 2) / - / LRV / NS 3059	

1) Throttle flap recommended

2) Approximate value, must be calculated eventually

3) Values with air gratings, stove casing is heat conducting

Ulrich Brunner GmbH
 Zellhuber Ring 17 -18
 D-84307 Eggenfelden
 Phone: +49 / (0)87 21 / 7 71-0
 Fax: +49 / (0)87 21 / 7 71-100
 info@brunner.de | www.brunner.de

BRUNNER®

BRUNNER products are offered and sold only by qualified dealers and service centres.
 Subject to technical and assortment changes. Errors excepted. (01/13)