

BRUNNER FIREPLACES



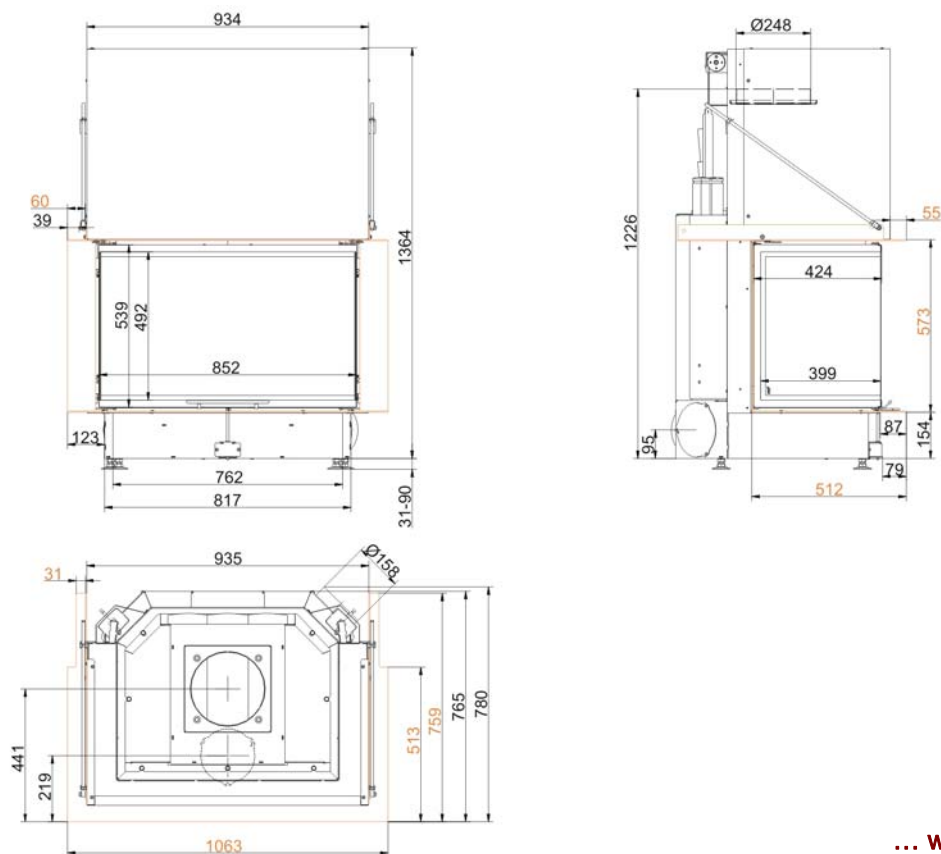
## Panorama-Kamin 57/40/85/40 lifting doors (easy-lift)

State: 31.01.2014

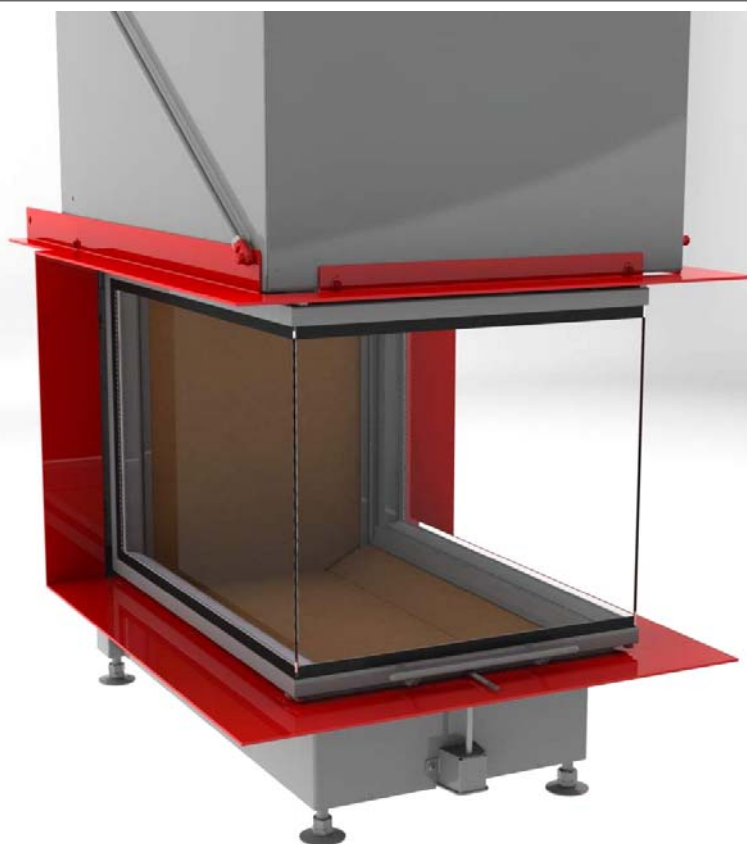


**BRUNNER**<sup>®</sup>  
*made in germany*

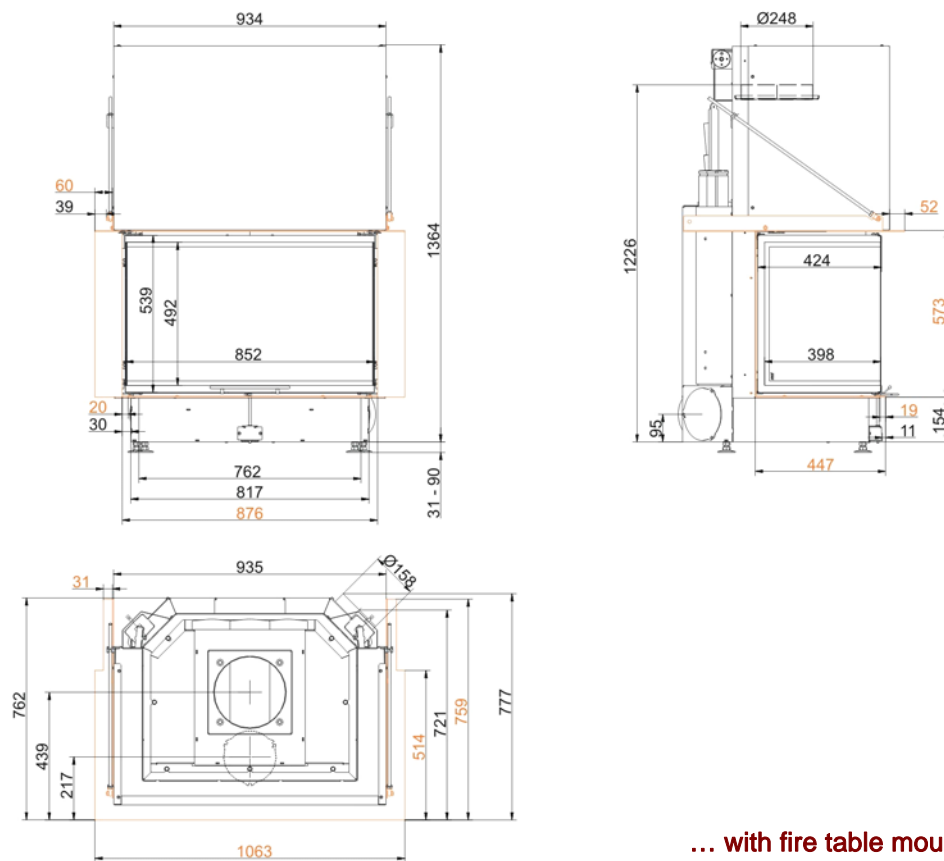
Dimension sheet | **Panorama-Kamin 57/40/85/40 lifting doors (easy-lift)**



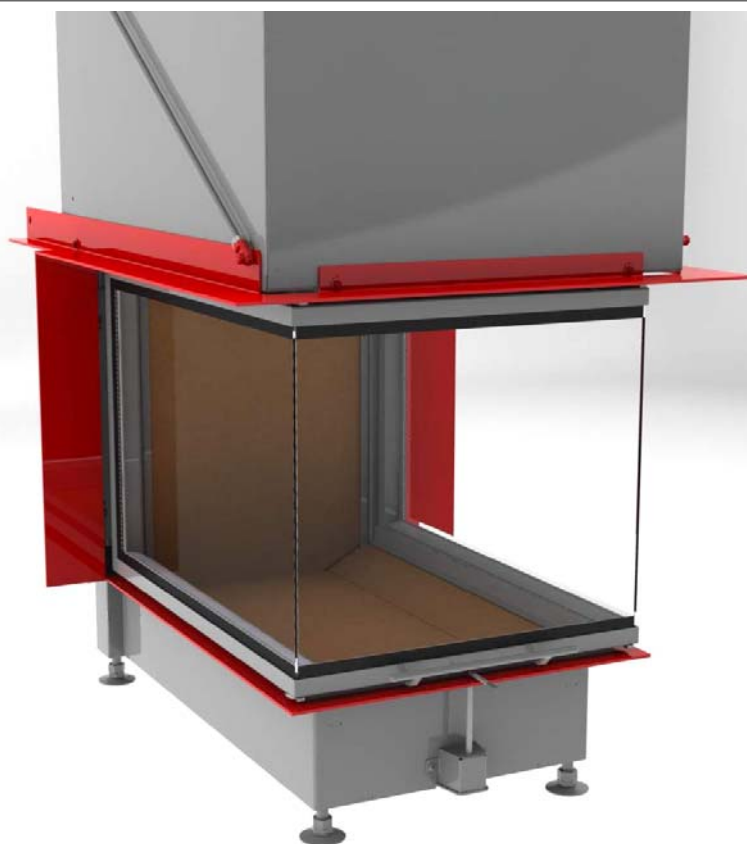
... with fire table



Dimension sheet | **Panorama-Kamin 57/40/85/40 lifting doors (easy-lift)**



... with fire table mounting frame



We suggest for CAD planing Palette CAD. Permanent updated drawings: [www.brunner.de](http://www.brunner.de)  
Frames / front versions are marked colored.

# Planning and installation

## Panorama-Kamin 57/40/85/40

Tested according to

EN 13229 W

Values measured at

nominal load

Suitable for all construction types according to rules

OK

### Data for functional demonstration

Rated heat power	kW	13,5
Firewood consumption	kg/h	4,3
Combustion performance	kW	16
Flue gas mass flow	g/s	14
Outlet temperature (before heating surface)	°C	-
Flue gas temperature after		
attached steel smoke hood	°C	220
adjoining cast iron radiator (GNF10)	°C	-
accumulation rings (MAS) <sup>1)</sup>	°C	-
adjoining ceramic accumulator <sup>2)</sup>	°C	-
accumulation stones (MSS)	°C	-
water boiler	°C	-
Necessary supply pressure	Pa	12
Combustion air consumption	m³/h	45
Combustion air connection Ø	mm	160

### Heat distribution

Insert / heating surface	%	50 / -
Glass (single / double)	%	50 / -
Boiler	%	-

### Cross-section of gratings for max. warm air power

Supply air	cm²	1000
Warm air	cm²	1000

### Minimal oven surface for closed construction type

Surface giving off heat	m²	4,8
-------------------------	----	-----

### Space inside oven chamber

Distance to oven chamber wall	cm	8
Distance to floor	cm	-

### Heat insulation without / with <sup>3)</sup> air gratings

Wall	cm	16 / 12
Floor	cm	2 / 2
Ceiling	cm	25 / 18
Insulation of additional fire door DHT	cm	-
Brick lining of protected walls	cm	10

### Weight

Fireplace + burning chamber	kg	237 + 65
-----------------------------	----	----------

### meets requirement limit values for

Germany / Austria / Switzerland / Norway

1.BImSchV (Stufe 2) / 15a BVG / LRV / NS 3059

1) Throttle flap recommended

2) Approximate value, must be calculated eventually

3) Values with air gratings, stove casing is heat conducting

Ulrich Brunner GmbH  
Zellhuber Ring 17 -18  
D-84307 Eggenfelden  
Phone: +49 / (0)87 21 / 7 71-0  
Fax: +49 / (0)87 21 / 7 71-100  
info@brunner.eu | www.brunner.eu

# BRUNNER®

BRUNNER products are offered and sold only by qualified dealers and service centres.  
Subject to technical and assortment changes. Errors excepted. (01/14)